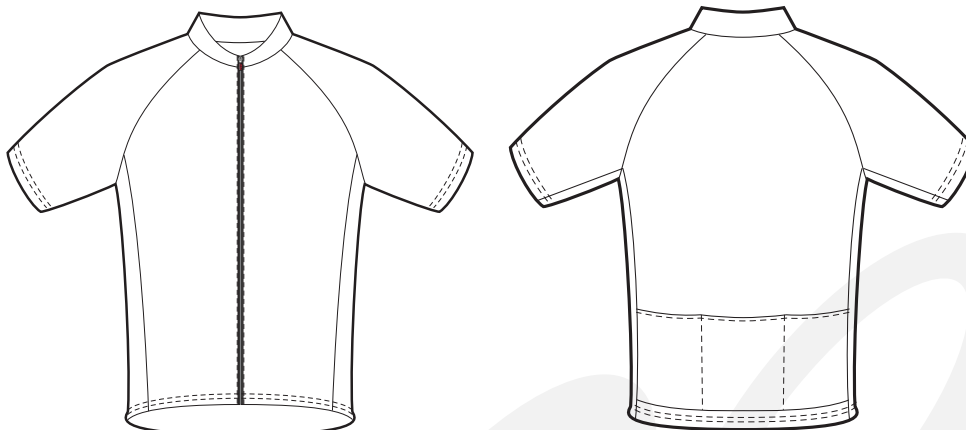


PRICING

5 - 24 pcs	25 - 49 pcs	50+ pcs
\$68	\$63	\$58

#B101F Men's Full Zip Short Sleeve Jersey



ATHENS SILVER

Our Athens Silver fabric is 100% polyester lightweight fabric that moves with the body and breathes. Great for medium to high temperature ranges.

- YKK Coil Zipper with Podiumwear Ergonomic Pull
- Contoured Raglan Sleeve Construction
- Soft Tension Elastic at Waist and Pockets
- Three Back Dump Pockets
- Semi Form Fit
- Fully Customizable



WICKING



BREATHABLE

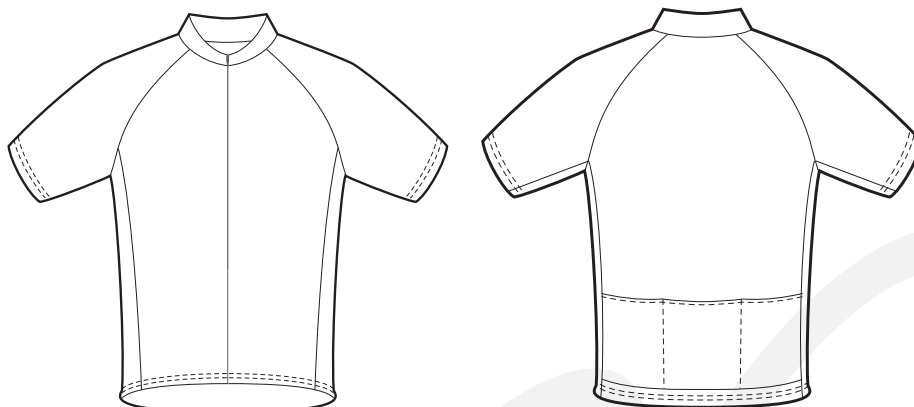
MEN'S SIZE CHART

	XSMALL	SMALL	MEDIUM	LARGE	XLARGE	XXLARGE
HEIGHT	5'0" - 5'3"	5'3" - 5'6"	5'6" - 5'10"	5'10" - 6'2"	6'2" - 6'5"	6'5" - 6'7"
WEIGHT	100-120lbs	120-140lbs	140-160lbs	160-190lbs	190-215lbs	215-240lbs
CHEST	32 - 35"	35 - 38"	38 - 40"	40 - 43"	43 - 46"	46 - 49"
WAIST	26 - 28"	28 - 30"	30 - 33"	33 - 36"	36 - 39"	39 - 42"
INSEAM	28 - 29"	29 - 31"	31 - 33"	32 - 34"	33 - 35"	34 - 36"

PRICING

5 - 24 pcs	25 - 49 pcs	50+ pcs
\$68	\$63	\$58

#B101H Men's Full Zip Short Sleeve Jersey



ATHENS SILVER

Our Athens Silver fabric is 100% polyester lightweight fabric that moves with the body and breathes. Great for medium to high temperature ranges.

- YKK 3/4 Length Hidden Zipper
- Contoured Raglan Sleeve Construction
- Soft Tension Elastic at Waist and Pockets
- Three Back Dump Pockets
- Semi Form Fit
- Fully Customizable



WICKING



BREATHABLE

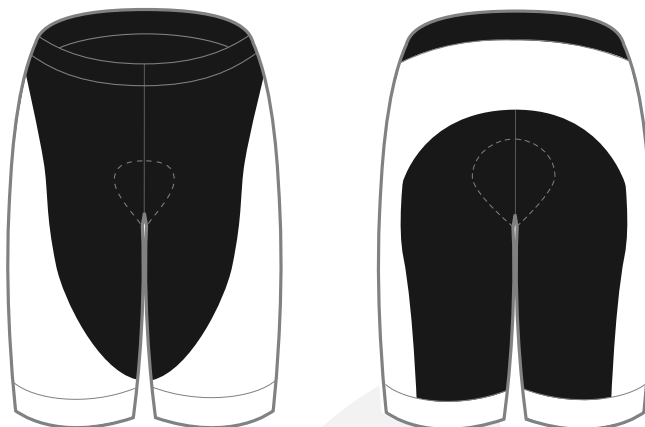
MEN'S SIZE CHART

	XSMALL	SMALL	MEDIUM	LARGE	XLARGE	XXLARGE
HEIGHT	5'0" - 5'3"	5'3" - 5'6"	5'6" - 5'10"	5'10" - 6'2"	6'2" - 6'5"	6'5" - 6'7"
WEIGHT	100-120lbs	120-140lbs	140-160lbs	160-190lbs	190-215lbs	215-240lbs
CHEST	32 - 35"	35 - 38"	38 - 40"	40 - 43"	43 - 46"	46 - 49"
WAIST	26 - 28"	28 - 30"	30 - 33"	33 - 36"	36 - 39"	39 - 42"
INSEAM	28 - 29"	29 - 31"	31 - 33"	32 - 34"	33 - 35"	34 - 36"

PRICING

5 - 24 pcs	25 - 49 pcs	50+ pcs
\$62	\$58	\$53

#B102 Men's Cycling Short

**VENTOUX GOLD**

Our Ventoux Gold fabric is an Italian-made warp knit, smooth and highly opaque fabric. The 80% polyester / 20% spandex content creates just the right combination of compression and weight.

&

VENTOUX SILVER

Our Ventoux Silver warp knit nylon-spandex fabric yields compression for muscle recovery and is the optimal weight for durability and comfort.

- Italian Made Domestique Chamois
- 2" Wide Leg Hem
- Foldover Waistband for Ultimate Comfort
- 9 5/8" Inseam (size Large)
- Form Fit
- Customizable Leg and Hem Panels



STRETCH



COMPRESSION

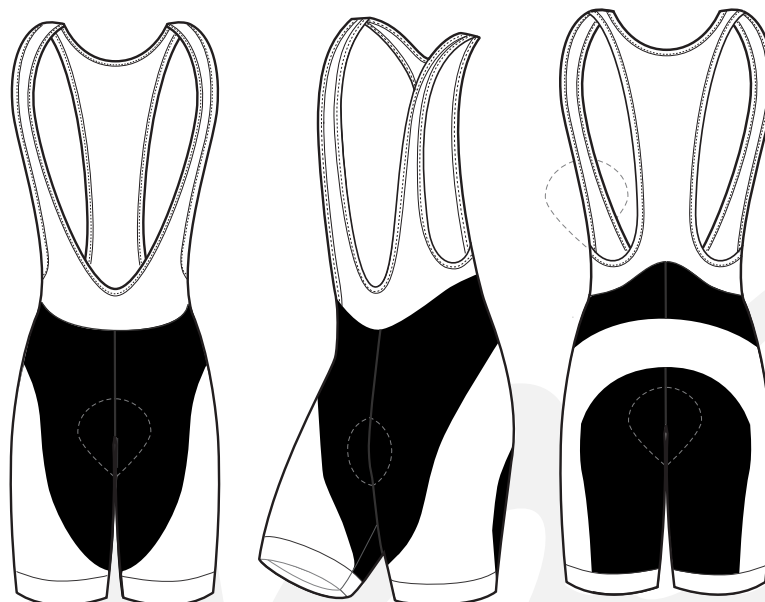
MEN'S SIZE CHART

	XSMALL	SMALL	MEDIUM	LARGE	XLARGE	XXLARGE
HEIGHT	5'0" - 5'3"	5'3" - 5'6"	5'6" - 5'10"	5'10" - 6'2"	6'2" - 6'5"	6'5" - 6'7"
WEIGHT	100-120lbs	120-140lbs	140-160lbs	160-190lbs	190-215lbs	215-240lbs
CHEST	32 - 35"	35 - 38"	38 - 40"	40 - 43"	43 - 46"	46 - 49"
WAIST	26 - 28"	28 - 30"	30 - 33"	33 - 36"	36 - 39"	39 - 42"
INSEAM	28 - 29"	29 - 31"	31 - 33"	32 - 34"	33 - 35"	34 - 36"

PRICING

5 - 24 pcs	25 - 49 pcs	50+ pcs
\$77	\$72	\$67

#B103 Men's Cycling Bib Short

**VENTOUX GOLD**

Our Ventoux Gold fabric is an Italian-made warp knit, smooth and highly opaque fabric. The 80% polyester / 20% spandex content creates just the right combination of compression and weight.

&

VENTOUX SILVER

Our Ventoux Silver warp knit nylon-spandex fabric yields compression for muscle recovery and is the optimal weight for durability and comfort.

- Italian Made Domestique Chamois
- 2" Wide Leg Hem
- Soft Compression Breathable Mesh Bibs Provide Comfort and Support
- 9 5/8" Inseam (size Large)
- Form Fit
- Customizable Leg and Hem Panels



STRETCH



COMPRESSION

MEN'S SIZE CHART

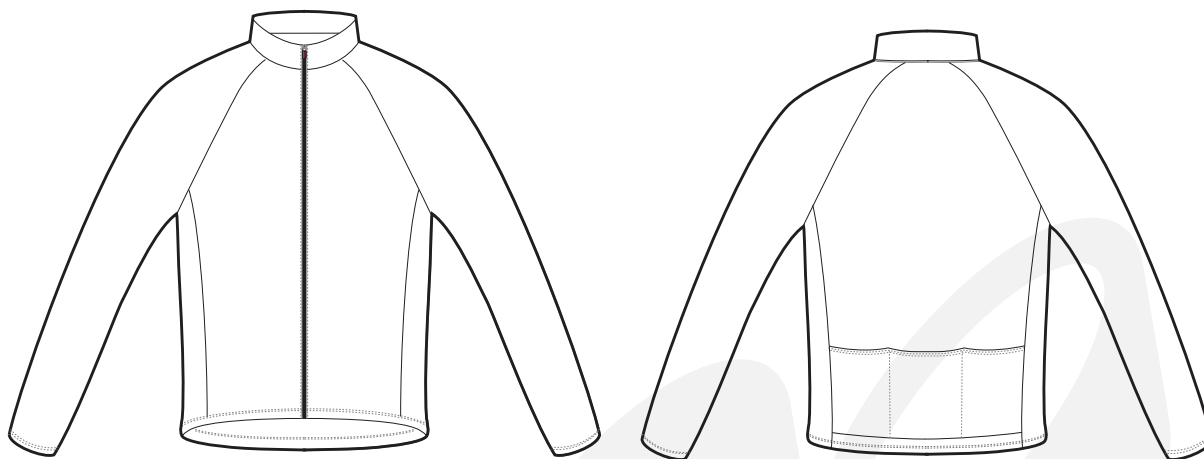
	XSMALL	SMALL	MEDIUM	LARGE	XLARGE	XXLARGE
HEIGHT	5'0" - 5'3"	5'3" - 5'6"	5'6" - 5'10"	5'10" - 6'2"	6'2" - 6'5"	6'5" - 6'7"
WEIGHT	100-120lbs	120-140lbs	140-160lbs	160-190lbs	190-215lbs	215-240lbs
CHEST	32 - 35"	35 - 38"	38 - 40"	40 - 43"	43 - 46"	46 - 49"
WAIST	26 - 28"	28 - 30"	30 - 33"	33 - 36"	36 - 39"	39 - 42"
INSEAM	28 - 29"	29 - 31"	31 - 33"	32 - 34"	33 - 35"	34 - 36"



PRICING

5 - 24 pcs	25 - 49 pcs	50+ pcs
\$88	\$83	\$78

#B108 Men's Long Sleeve Jersey



ATHENS SILVER

Our Athens Silver fabric is 100% polyester lightweight fabric that moves with the body and breathes. Great for medium to high temperature ranges.

- YKK Coil Zipper with Podiumwear Ergonomic Pull
- Contoured Raglan Sleeve Construction
- Soft Tension Elastic at Waist and Pockets
- Three Back Dump Pockets
- Semi Form Fit
- Fully Customizable



WICKING



BREATHABLE

MEN'S SIZE CHART

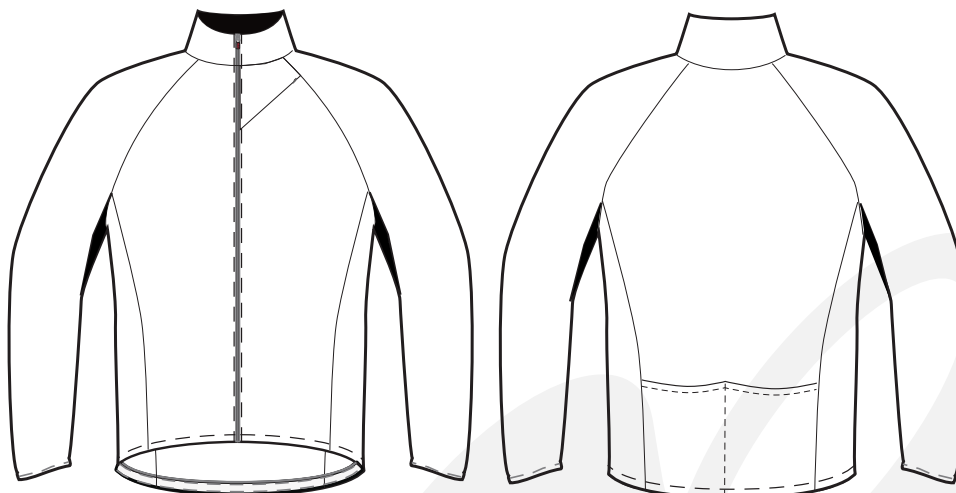
	XSMALL	SMALL	MEDIUM	LARGE	XLARGE	XXLARGE
HEIGHT	5'0" - 5'3"	5'3" - 5'6"	5'6" - 5'10"	5'10" - 6'2"	6'2" - 6'5"	6'5" - 6'7"
WEIGHT	100-120lbs	120-140lbs	140-160lbs	160-190lbs	190-215lbs	215-240lbs
CHEST	32 - 35"	35 - 38"	38 - 40"	40 - 43"	43 - 46"	46 - 49"
WAIST	26 - 28"	28 - 30"	30 - 33"	33 - 36"	36 - 39"	39 - 42"
INSEAM	28 - 29"	29 - 31"	31 - 33"	32 - 34"	33 - 35"	34 - 36"



PRICING

5 - 24 pcs	25 - 49 pcs	50+ pcs
\$145	\$140	\$135

#B111 Cycling Mid-Weight Jacket



STOCKHOLM GOLD

Our Stockholm Gold 4-way stretch polyester fabric has a water resistant/breathable membrane in between two soft and highly stretchable layers of fabric. The inner layer is brushed, providing extra warmth while the outer layer has a DWR coating to keep you dry. These three layers combine to form a pliable fabric with dynamic stretch for full freedom of movement.

- YKK Coil Zipper with Podiumwear Ergonomic Pull
- Contoured Raglan Sleeve Construction
- Extra Length in the Sleeves for Full Coverage
- Zippered Chest Pocket
- Two Back Dump Pockets
- Breathable Inserts at Critical Sweat Zones
- Fleece Lined Internal Collar
- Semi-Form Fit
- Fully Customizable



STRETCH



WATER RESISTANT



WIND RESISTANT



BREATHABLE



THERMAL

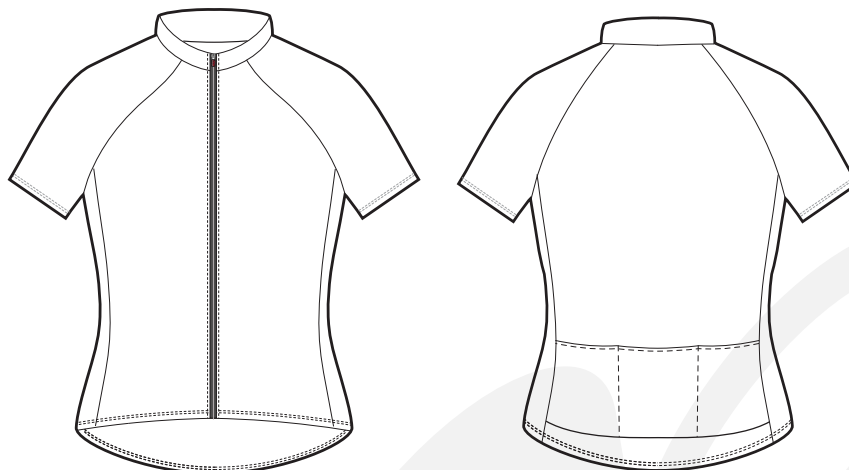
MEN'S SIZE CHART

	XSMALL	SMALL	MEDIUM	LARGE	XLARGE	XXLARGE
HEIGHT	5'0" - 5'3"	5'3" - 5'6"	5'6" - 5'10"	5'10" - 6'2"	6'2" - 6'5"	6'5" - 6'7"
WEIGHT	100-120lbs	120-140lbs	140-160lbs	160-190lbs	190-215lbs	215-240lbs
CHEST	32 - 35"	35 - 38"	38 - 40"	40 - 43"	43 - 46"	46 - 49"
WAIST	26 - 28"	28 - 30"	30 - 33"	33 - 36"	36 - 39"	39 - 42"
INSEAM	28 - 29"	29 - 31"	31 - 33"	32 - 34"	33 - 35"	34 - 36"

PRICING

5 - 24 pcs	25 - 49 pcs	50+ pcs
\$68	\$63	\$58

#B104F Women's Full Zip Short Sleeve Jersey



ATHENS SILVER

Our Athens Silver fabric is 100% polyester lightweight fabric that moves with the body and breathes. Great for medium to high temperature ranges.

- YKK Coil Zipper with Podiumwear Ergonomic Pull
- Contoured Raglan Sleeve Construction
- Smooth Tailored Waist Hem with No Elastic
- Three Back Dump Pockets
- Semi Form Fit
- Fully Customizable



WICKING



BREATHABLE

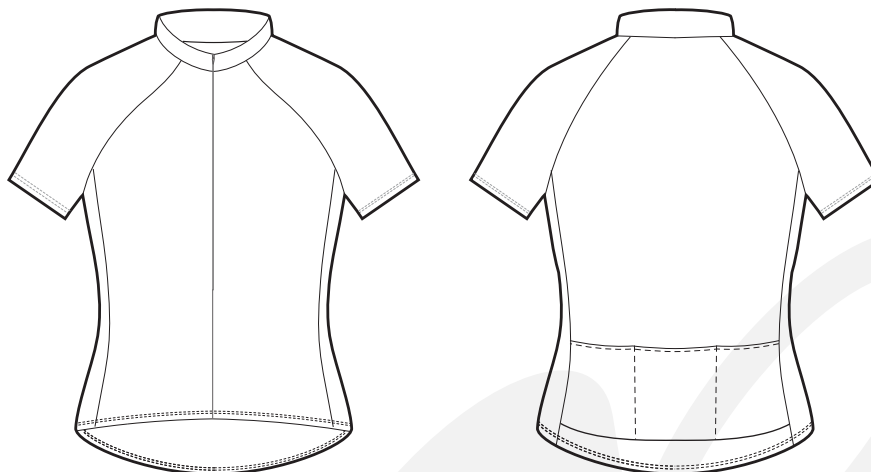
WOMEN'S SIZE CHART

	XSMALL	SMALL	MEDIUM	LARGE	XLARGE	XXLARGE
HEIGHT	4'9" - 5'1"	5'2" - 5'4"	5'5" - 5'8"	5'8" - 5'10"	5'11"-5'12"	5'12"+
WEIGHT	90-110lbs	110-120lbs	120-140lbs	140-160lbs	160-180lbs	180-200lbs
CHEST	31 - 33"	33 - 35"	35 - 37"	37 - 39"	39 - 41"	41 - 43"
WAIST	24 - 26"	26 - 28"	28 - 30"	30 - 32"	32 - 34"	34 - 36"
INSEAM	28 - 29"	29 - 30"	30 - 31"	31 - 32"	32 - 33"	34 - 35"

PRICING

5 - 24 pcs	25 - 49 pcs	50+ pcs
\$68	\$63	\$58

#B104H Women's Half Zip Short Sleeve Jersey



ATHENS SILVER

Our Athens Silver fabric is 100% polyester lightweight fabric that moves with the body and breathes. Great for medium to high temperature ranges.

- YKK 3/4 Length Hidden Zipper
- Contoured Raglan Sleeve Construction
- Smooth Tailored Waist Hem with No Elastic
- Three Back Dump Pockets
- Semi Form Fit
- Fully Customizable



WICKING



BREATHABLE

WOMEN'S SIZE CHART

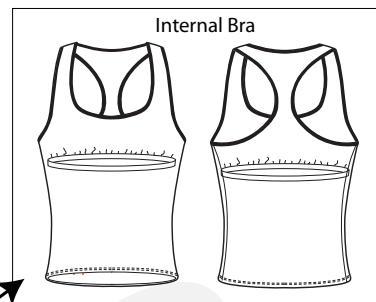
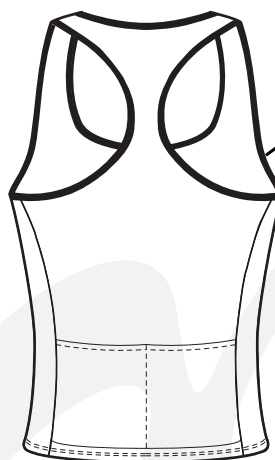
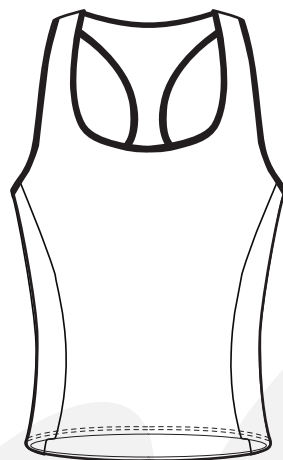
	XSMALL	SMALL	MEDIUM	LARGE	XLARGE	XXLARGE
HEIGHT	4'9" - 5'1"	5'2" - 5'4"	5'5" - 5'8"	5'8" - 5'10"	5'11"-5'12"	5'12"+
WEIGHT	90-110lbs	110-120lbs	120-140lbs	140-160lbs	160-180lbs	180-200lbs
CHEST	31 - 33"	33 - 35"	35 - 37"	37 - 39"	39 - 41"	41 - 43"
WAIST	24 - 26"	26 - 28"	28 - 30"	30 - 32"	32 - 34"	34 - 36"
INSEAM	28 - 29"	29 - 30"	30 - 31"	31 - 32"	32 - 33"	34 - 35"



PRICING

5 - 24 pcs	25 - 49 pcs	50+ pcs
\$58	\$53	\$48

#B105 Women's Racerback Bike Tank



LILLEHAMMER SILVER

Our Lillehammer Silver is a poly-spandex fabric with a soft and smooth hand feel that has light compression for a great next to the body fit.

- Shelf Bra with Plush Elastic
- Smooth Tailored Waist Hem with No Elastic
- Two Back Dump Pockets
- Form Fit
- Fully Customizable



STRETCH



BREATHABLE

WOMEN'S SIZE CHART

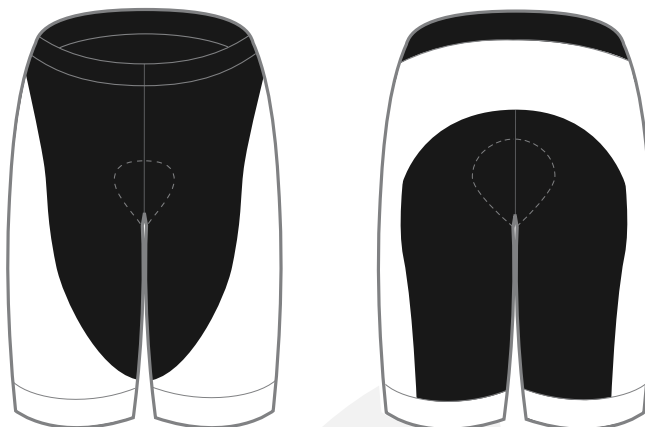
	XSMALL	SMALL	MEDIUM	LARGE	XLARGE	XXLARGE
HEIGHT	4'9" - 5'1"	5'2" - 5'4"	5'5" - 5'8"	5'8" - 5'10"	5'11"-5'12"	5'12"+
WEIGHT	90-110lbs	110-120lbs	120-140lbs	140-160lbs	160-180lbs	180-200lbs
CHEST	31 - 33"	33 - 35"	35 - 37"	37 - 39"	39 - 41"	41 - 43"
WAIST	24 - 26"	26 - 28"	28 - 30"	30 - 32"	32 - 34"	34 - 36"
INSEAM	28 - 29"	29 - 30"	30 - 31"	31 - 32"	32 - 33"	34 - 35"



PRICING

5 - 24 pcs	25 - 49 pcs	50+ pcs
\$68	\$58	\$52

#B106 Women's Cycling Short

**VENTOUX GOLD**

Our Ventoux Gold fabric is an Italian-made warp knit, smooth and highly opaque fabric. The 80% polyester / 20% spandex content creates just the right combination of compression and weight.

&

VENTOUX SILVER

Our Ventoux Silver warp knit nylon-spandex fabric yields compression for muscle recovery and is the optimal weight for durability and comfort.

- Italian Made Women's Domestique Chamois
- 2" Wide Leg Hem
- Foldover Waistband for Ultimate Comfort
- 9" Inseam (size Medium)
- Form Fit
- Customizable Leg and Hem Panels



STRETCH



COMPRESSION

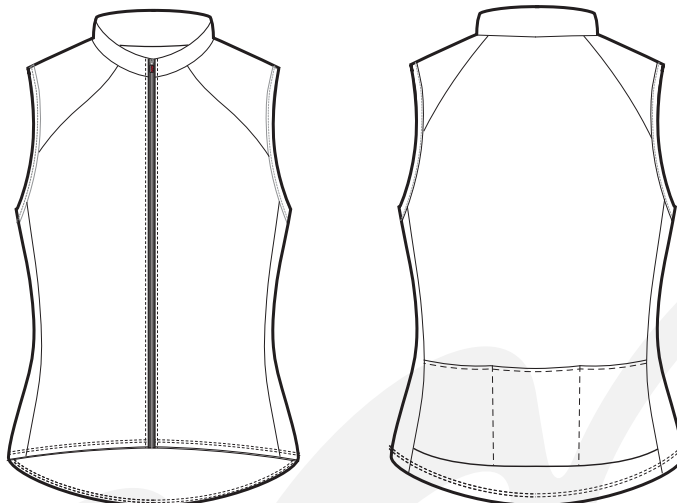
WOMEN'S SIZE CHART

	XSMALL	SMALL	MEDIUM	LARGE	XLARGE	XXLARGE
HEIGHT	4'9" - 5'1"	5'2" - 5'4"	5'5" - 5'8"	5'8" - 5'10"	5'11"-5'12"	5'12"+
WEIGHT	90-110lbs	110-120lbs	120-140lbs	140-160lbs	160-180lbs	180-200lbs
CHEST	31 - 33"	33 - 35"	35 - 37"	37 - 39"	39 - 41"	41 - 43"
WAIST	24 - 26"	26 - 28"	28 - 30"	30 - 32"	32 - 34"	34 - 36"
INSEAM	28 - 29"	29 - 30"	30 - 31"	31 - 32"	32 - 33"	34 - 35"

PRICING

5 - 24 pcs	25 - 49 pcs	50+ pcs
\$63	\$58	\$53

#B107F Women's Full Zip Sleeveless Jersey



ATHENS SILVER

Our Athens Silver fabric is 100% polyester lightweight fabric that moves with the body and breathes. Great for medium to high temperature ranges.

- YKK Coil Zipper with Podiumwear Ergonomic Pull
- Smooth Tailored Waist Hem with No Elastic
- Three Back Dump Pockets
- Semi Form Fit
- Fully Customizable



WICKING



BREATHABLE

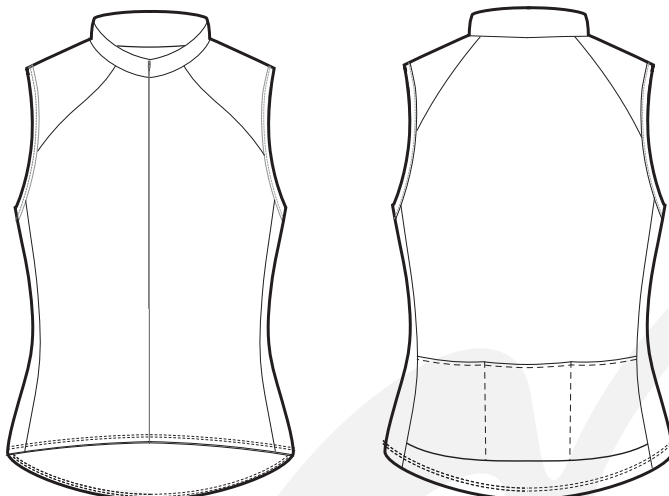
WOMEN'S SIZE CHART

	XSMALL	SMALL	MEDIUM	LARGE	XLARGE	XXLARGE
HEIGHT	4'9" - 5'1"	5'2" - 5'4"	5'5" - 5'8"	5'8" - 5'10"	5'11"-5'12"	5'12"+
WEIGHT	90-110lbs	110-120lbs	120-140lbs	140-160lbs	160-180lbs	180-200lbs
CHEST	31 - 33"	33 - 35"	35 - 37"	37 - 39"	39 - 41"	41 - 43"
WAIST	24 - 26"	26 - 28"	28 - 30"	30 - 32"	32 - 34"	34 - 36"
INSEAM	28 - 29"	29 - 30"	30 - 31"	31 - 32"	32 - 33"	34 - 35"

PRICING

5 - 24 pcs	25 - 49 pcs	50+ pcs
\$63	\$58	\$53

#B107H Women's Half Zip Sleeveless Jersey



ATHENS SILVER

Our Athens Silver fabric is 100% polyester lightweight fabric that moves with the body and breathes. Great for medium to high temperature ranges.

- YKK 3/4 Length Hidden Zipper
- Smooth Tailored Waist Hem with No Elastic
- Three Back Dump Pockets
- Semi Form Fit
- Fully Customizable



WICKING



BREATHABLE

WOMEN'S SIZE CHART

	XSMALL	SMALL	MEDIUM	LARGE	XLARGE	XXLARGE
HEIGHT	4'9" - 5'1"	5'2" - 5'4"	5'5" - 5'8"	5'8" - 5'10"	5'11"-5'12"	5'12"+
WEIGHT	90-110lbs	110-120lbs	120-140lbs	140-160lbs	160-180lbs	180-200lbs
CHEST	31 - 33"	33 - 35"	35 - 37"	37 - 39"	39 - 41"	41 - 43"
WAIST	24 - 26"	26 - 28"	28 - 30"	30 - 32"	32 - 34"	34 - 36"
INSEAM	28 - 29"	29 - 30"	30 - 31"	31 - 32"	32 - 33"	34 - 35"