

2020 NICA TEAM APPAREL



Proud National Jersey Sponsor of NICA



WE GET IT.

You want to
manage a team
not a clothing order.



HOW WE HELP NICA TEAMS:

1. CONCIERGE-LEVEL SERVICE

We got into this industry to serve teams. We understand what teams need. Need help? Just call!

2. MADE IN MINNESOTA QUALITY

We know it's good because WE MAKE IT in St. Paul, MN, not some factory overseas.

3. FREE DESIGN

Our designers work with you directly to come up with the perfect design for your team. No charge.

4. TEAM STOREFRONT

No more spread sheets! No more collecting \$! Sit back and relax - we got this.

5. LOW OR NO MINIMUMS

5-piece minimum on new orders, no minimums on women's products or re-orders.

6. DIRECT SHIPPING

No more dragging uniforms around to pass out at practice. We ship directly to each team member for you.

JERSEYS

5-Piece Minimum
No Minimum on Reorders



MTB SS JERSEY

\$45

MEN'S & WOMEN'S

- Semi-form fit
- Raglan sleeve construction
- Lightweight, breathable, wicking fabric



GOLD LEVEL 3/4 MTB SLEEVE JERSEY

\$65

MEN'S & WOMEN'S

- Extra length in back for full coverage while riding
- Microsuede glasses/goggle wipe at right bottom hem
- Soft, lightweight, breathable, wicking fabric
- Extra panels for superior fit and to keep jersey in place



SILVER LEVEL 3/4 SLEEVE MTB JERSEY

\$50

UNISEX

- Raglan sleeve construction
- Lightweight, breathable, wicking fabric



NEW FIT BRONZE LEVEL FULL ZIP JERSEY

\$68

MEN'S & WOMEN'S

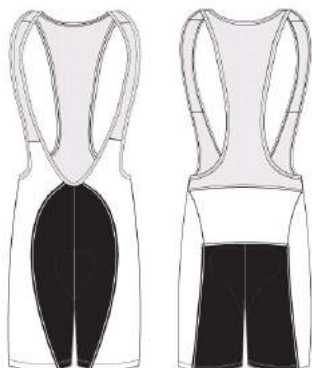
- Full length YKK coil zipper
- Three back dump pockets
- Soft tension elastic at waist & pockets
- Lightweight stretch knit fabric with superior wicking ability
- Tighter fit than old bronze. Size up if you want a loose fit.

*See many more products at Podiumwear.com



5-Piece Minimum
No Minimum on Reorders

BIBS, SHORTS & MTB BAGGIES



BRONZE LEVEL CYCLING BIBS

\$99

MEN'S & WOMEN'S

- Italian made Elastic Interface chamois
- Soft breathable mesh upper
- Silicone gripper at leg openings
- Semi-custom: your design on back & leg panels



BRONZE LEVEL CYCLING SHORTS

\$95

MEN'S & WOMEN'S

- Italian made Elastic Interface chamois
- Silicone gripper at leg openings
- Semi-custom: your design on back & leg panels



GOLD LEVEL TRAVERSE MTB BAGGIES

\$135

MEN'S & WOMEN'S

- Lightweight, quick-drying, durable fabric
- Adjustable clasp waistband system
- Zip fly with double snap closure
- Large zippered leg pocket and small hip floating pocket
- 2-ply reinforced saddle area



SILVER LEVEL TRAVERSE MTB BAGGIES

\$98

UNISEX

- Lightweight, durable fabric
- Adjustable clasp waistband system
- Zip fly with double snap closure
- Zippered right hip pocket

*See many more products at Podiumwear.com



GETTING STARTED



WE'RE HERE TO HELP!



CREATE AN ACCOUNT

- Go to <https://podiumwear.com/cycling/>
- Click the "Customer Login" tab in top right of screen to create an account.
- Once you have an account, click the "Start Order Now" tab. It's easy!



START YOUR ORDER EARLY

- Sprint NICA league teams should start their orders in January 2020 to allow plenty of time for the design process.
- Visit the NICA page on our website for more information, tips, & resources: <https://www.podiumwear.com/sports/cycling/nical>



CONTACT US ANY TIME!

Email: info@podiumwear.com

Call: 651-330-2718

OUR PROCESS



TESTIMONIALS



“

Podiumwear has excelled in helping us through every step of the production process. The results are amazing and the gear just feels top notch.

- Head Coach

”



“

I really like the online storefront set-up for teams. It gives NICA students, parents and coaches a more streamlined way of ordering cycling clothing.

- Head Coach

”



Nikon D500, 85mm, 1/74, 1/800s

“

Yours is my favorite gear, and you beat our past custom jersey provider in every way: minimums, quality, price and personal attention.

- Head Coach

”



Do You Know Who Makes Your Clothes?

It matters where it's made.



MEET YOUR SALES/CUSTOMER SERVICE TEAM



CATHY STEWART

Customer Service

cathy@podiumwear.com
651-330-2718



AARON SMITH

Sales Manager

aaron@podiumwear.com
651-330-2718

