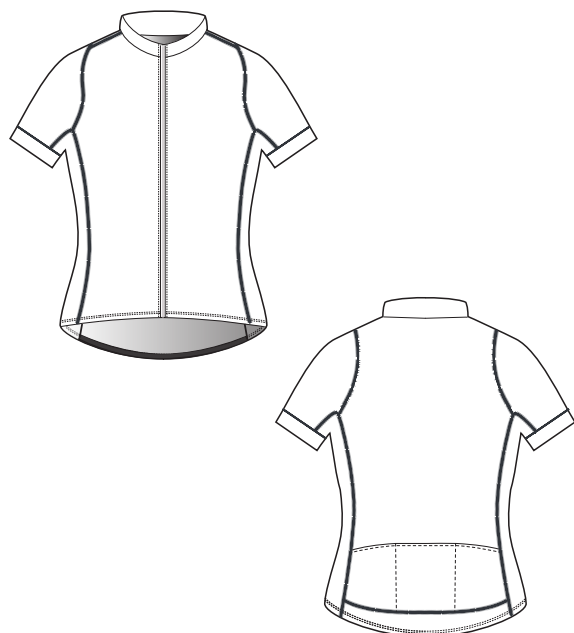


B232G: Women's Gold SS Jersey



FABRIC DETAILS : SAN REMO **GOLD**

Our San Remo Gold is a Polyester Spandex blend with a 4% Carbon content. This ultra lightweight fabric has a slightly open surface structure for heightened wicking and breathability. The 4-way stretch allows for a snug but comfortable aerodynamic fit. Add the benefit of Carbon fiber yarn, which has been shown to foster blood circulation as well as improve the rate of evaporation and you have a world class textile that allows you to perform at your peak.



STRETCH



WICKING



BREATHABLE



CARBON

GARMENT DETAILS:

Flatseam Construction Throughout with 6 Thread Color Options

Laser Cut Fabric Grip Band with Light Silicone Application at Sleeve Openings

YKK Lightweight Coil Zipper with Podiumwear Ergonomic Pull

Kissing Welt Zipper Construction for Seamless Artwork across the Chest

Set-In Sleeve Construction

Three Back Dump Pockets

Lightweight Silicone Gripper at internal back bottom opening

Form Fit

Fully Customizable

Available in Sizes XS - 4XL

PRICING: \$100

SIZE CHART : WOMEN'S CYCLING (Gold & Silver Products)

	XSMALL	SMALL	MEDIUM	LARGE	XLARGE	2XLARGE
HEIGHT	4'9" - 5'1"	5'2" - 5'4"	5'5" - 5'8"	5'8" - 5'10"	5'9" - 5'11"	5'11" - 5'12"
WEIGHT	90 - 110 lbs	110 - 120 lbs	120-140 lbs	140 - 160 lbs	160 - 180 lbs	180 - 200 lbs
CHEST	31" - 33"	33" - 35"	35" - 37"	37" - 39"	39" - 41"	41" - 43"
WAIST	24" - 26"	26" - 28"	28" - 30"	30" - 32"	32" - 34"	34" - 36"
HIP	34" - 36"	36" - 38"	38" - 40"	40" - 42"	42" - 44"	44" - 46"
INSEAM	28" - 29"	29" - 30"	30" - 31"	31" - 32"	32" - 33"	33" - 35"

