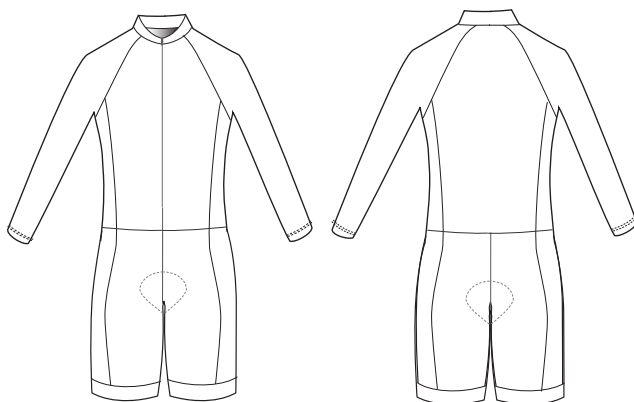


**B259: Women's Long Sleeve Skinsuit**



**CHAMOIS DETAILS:**

**GOLD CHAMOIS**

Our Italian made Women's Gold Chamois uses **four** types of foams with varied densities to provide the best weight distribution on the saddle, giving comfort even on extremely long rides. The all-way stretch Carbon fabric aids heat dispersion, reduces friction and adds natural bacteriostasis and antistatic charges.

**SILVER CHAMOIS**

Our Italian made Women's Silver Chamois uses **three** high-density foams concentrated in the central heart shape. The all-way stretch Carbon fabric aids heat dispersion, reduces friction and adds natural bacteriostasis and antistatic charges.

**BRONZE CHAMOIS**

Our Italian made Women's Bronze Chamois uses **two** high-density foams concentrated in the central heart shape. This, combined with an anatomic fit and 4-way stretch, provide comfort and freedom of movement.

**FABRIC DETAILS: MELBOURNE SILVER**

Melbourne Silver is a Polyester Spandex warp knit. It is our most compressive fabric, with excellent all-way stretch, is highly durable and allows for phenomenal color saturation.



STRETCH



COMPRESSION



BREATHABLE

**GARMENT DETAILS:**

YKK Hidden Zipper

Available in our Gold, Silver or Bronze Chamois

Contoured Raglan Sleeve Construction

Tunnel Tested Lightweight Fabric on Sleeves and Side Panels

Traditional Collar Construction

2" Wide Foldover Leg Hem

8 1/2" Inseam (Size Large)

Form Fit

Fully Customizable

**PRICING:**

**GOLD CHAMOIS**

\$160

**SILVER CHAMOIS**

\$155

**BRONZE CHAMOIS**

\$145

**SIZE CHART : WOMEN'S CYCLING (Gold & Silver Products)**

	XSMALL	SMALL	MEDIUM	LARGE	XLARGE	2XLARGE
HEIGHT	4'9" - 5'1"	5'2" - 5'4"	5'5" - 5'8"	5'8" - 5'10"	5'9" - 5'11"	5'11" - 5'12"
WEIGHT	90 - 110 lbs	110 - 120 lbs	120-140 lbs	140 - 160 lbs	160 - 180 lbs	180 - 200 lbs
CHEST	31" - 33"	33" - 35"	35" - 37"	37" - 39"	39" - 41"	41" - 43"
WAIST	24" - 26"	26" - 28"	28" - 30"	30" - 32"	32" - 34"	34" - 36"
HIP	34" - 36"	36" - 38"	38" - 40"	40" - 42"	42" - 44"	44" - 46"
INSEAM	28" - 29"	29" - 30"	30" - 31"	31" - 32"	32" - 33"	33" - 35"

